



Convention Center Exterior

The Irving Convention Center at Las Colinas is a 275,000-square-foot multi-functional building, with a 50,000-square-foot, column-free exhibit hall, a 20,000-square-foot ballroom and 20,000 square feet of breakout meeting space. The facility's highly flexible, stacked design allows it to host several different types of events concurrently, and the building's unique architecture, vertical design and interior finishes create a new niche in the market.

Located on a 40-acre tract in the Las Colinas Urban Center in Irving, Texas, the convention center is the first phase of a mixed-use entertainment district that is planned to include a convention center hotel, a 6,500-person capacity concert venue, restaurants, and retail space. Home to thousands of corporations and the global headquarters of four Fortune 500 companies, Irving understands the high-level demands of business meetings and events, and the customer service needs that accompany these. More than 75 hotels, including the state's only five-diamond resort, are literally within 10 minutes of the convention center. In fact, 18 properties are within a 2-mile radius.

With Dallas/Fort Worth International Airport just six miles west, access to the Irving Convention Center is quick, efficient and easy. DART Light Rail's Orange Line will connect Dallas with Las Colinas by 2012 and with DFW Airport by 2014, making the Irving Convention Center even more accessible and convenient for travelers.

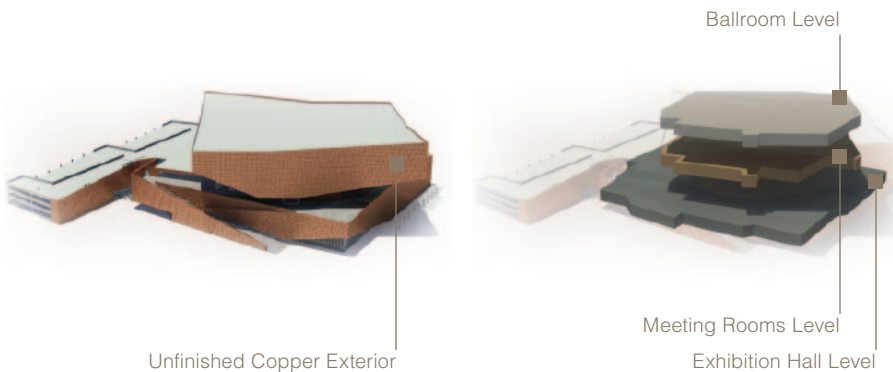
## Irving Convention Center at Las Colinas

500 W Las Colinas Blvd

Irving, Texas 75039

(972) 252-7476

[irvingconventioncenter.com](http://irvingconventioncenter.com)



# Irving Convention Center at Las Colinas



Exhibition Hall Lobby

## Convention Center Overview

The building is divided into three main levels with the 50,000-square-foot, column-free exhibition hall on the first floor, along with the concierge desk and several green rooms. The mezzanine level features a relaxing café and outdoor, covered terrace with access from both inside and outside the facility.

The meeting and junior ballroom level provides 20,000 square feet of meeting space in up to 20 different breakout rooms, each averaging about 1,000 square feet. The space is divided into 11 dedicated conference rooms, one dedicated board room and a junior ballroom that can be divided into a variety of flexible configurations, including up to 8 individual meeting rooms. This level also includes the well-equipped business center, which is available to attendees during normal convention center hours. The unique layout of the prefunction space on this level is also highly flexible and can accommodate multiple groups or provide several staging areas for the same group.

An exceptionally well-appointed 20,000-square-foot grand ballroom and prefunction area is located on the top level of the convention center. This flexible space can be divided into an array of meeting rooms or smaller event rooms. The large kitchen that services the convention center is also located on this floor.

## Exhibition Hall Level

At 50,000 square feet, the column-free exhibit hall can accommodate approximately 4,500 attendees theater-style. It can also accommodate over 275 booths, depending upon floor layout. There is retractable seating for 1,100, with seats folding away into built-in storage.

The floor is divisible in half, allowing two simultaneous uses of approximately 25,000 square feet each, or event move-in/move-out on one side while an event is taking place on the other side.

Other amenities include two green rooms and a show manager's office with a view overlooking the show floor. Ten loading docks allow for sufficient access and ease for show load-in/load-out.

## Meeting Rooms Level

This "conference center" level is a key element of the building's design. There are 20 breakout rooms, each approximately 1,000 square feet in size. Eight of these rooms are also grouped together to create a junior ballroom space of up to 8,000 square feet.

There is a business center on this floor, as well. Ample prefunction space allows for plenty of room for catered breaks, and the floor's layout also allows multiple users to occupy the floor simultaneously, while each can easily retain their own areas.

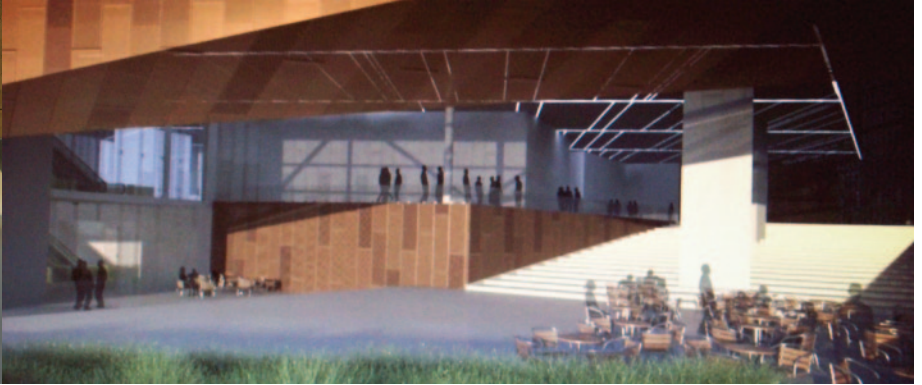
## Ballroom Level

A wealth of prefunction space, with south and east vistas to the Dallas skyline, allows for plenty of room for event registration and receptions.

The 20,000-square-foot ballroom is divisible a number of ways – in half to create 2 approximately 10,000-square-foot spaces, with each of those halves divisible in thirds.



Convention Center Café



Stairs to Mezzanine

## A New Dimension to Green Meetings

Innovative in its design and approach to meetings, the Irving Convention Center at Las Colinas addresses the environmental standards required by so many organizations today. The facility is indeed a departure from the traditional, institutional big box. The ability to move fluidly within spaces and the creation of interesting places to interact with colleagues and clients have guided its design as much as a respect for the environment. The project is registered for LEED certification with the U.S. Green Building Council.

## A Natural Copper “Skin”

A natural copper “skin” wraps the building’s exterior and creates a dynamic, changing appearance to the building thanks to graduated perforations in the material that create transparency as light shines through. The copper panels will weather gracefully over time, aging to a beautiful green patina. Utilizing this natural material ensures that no chemicals or paint will be needed to maintain it. The perforated pattern of the copper panels also provides a cushion of cooling air to reduce the air conditioning demand. Many of the materials used in the interior finish-out, while exceptionally high-end, are constructed of either recycled or locally sourced materials.

## Vertically Stacked Design

The vertically stacked layout, in addition to the copper paneling, allows the building to shade itself and its outdoor patios, while utilizing a much smaller footprint of land than a traditional facility, creating efficiencies not only in land use, but in servicing events. The building’s vertical approach also makes it highly efficient for event attendees, allowing for seamless movement between events. An integrated parking garage reduces the amount of asphalt required for surface lots; the garage anchors the building’s west side, providing another mechanism to soften solar impact. The building’s light-colored roof helps to reflect heat from the sun.

## Minimized Water Use

Utilizing water from nearby Lake Carolyn, more than 90% of the building’s water requirements will be met with water re-used for landscaping and other non-potable applications, including the building’s cooling systems. The landscaping design includes drought-resistant native plants that require minimal watering. A dense canopy of trees on the plaza will offer a cooling shade while reducing the ambient temperature.

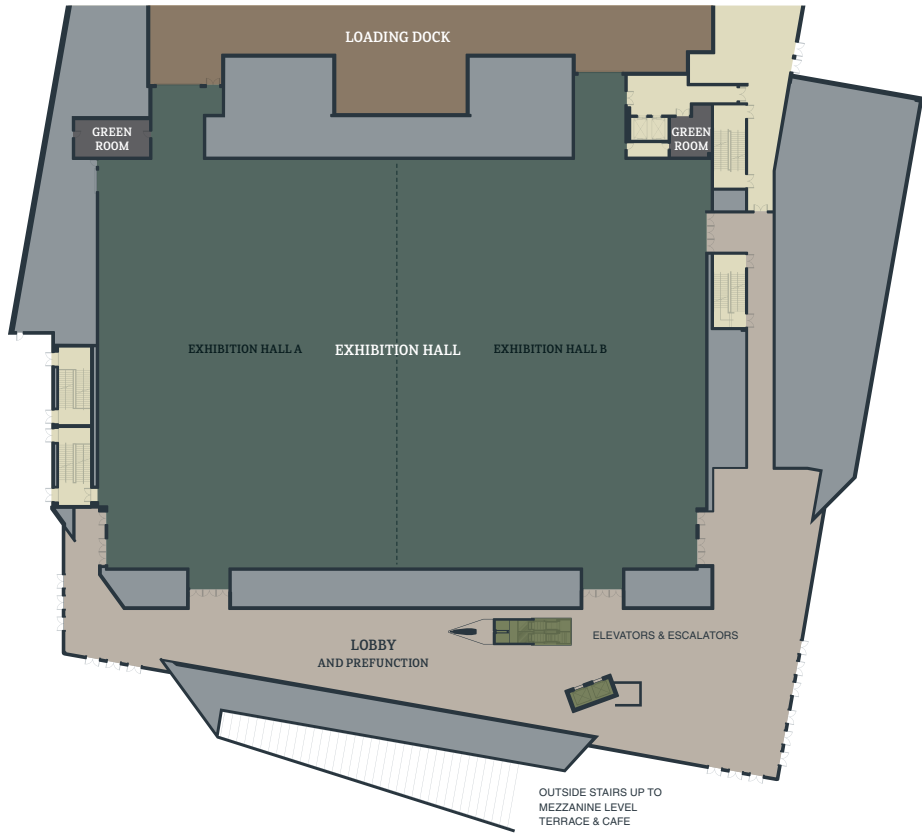
## To Find Out More

Visit the center’s website at [IrvingConventionCenter.com](http://IrvingConventionCenter.com), where you can take a virtual tour of the building and review digital storyboards of interior finishes.

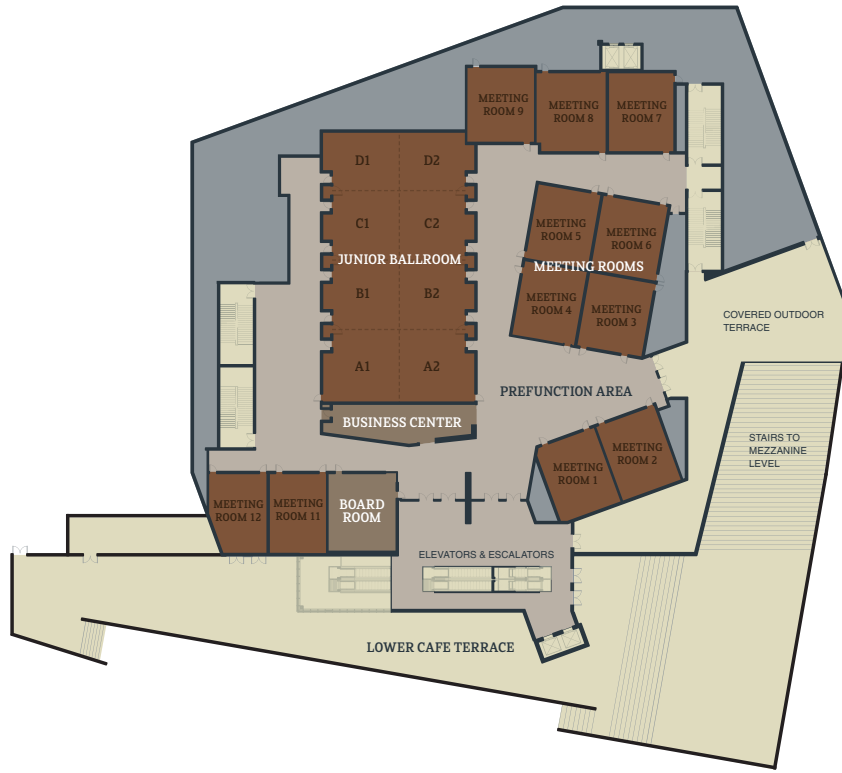
# Irving Convention Center at Las Colinas

## Exhibition Hall Level

- 50,000 square feet ■
- 35-foot-high ceilings ■
- column-free exhibit space ■
- 275+ trade show booths ■
- 4,500 seated guests ■



ROOM	SIZE		CAPACITY					
	L × W × H	SQ. FT.	BANQUET 72" ROUNDS	RECEPTION	THEATER	CLASSROOM	8' × 10' BOOTHS	10' × 10' BOOTHS
Exhibition Hall	184×264×35	48,576	3,000	4,860	4,500	2,508	288	218
Exhibition Hall A	184×132×35	24,288	1,180	2,420	2,184	1,260	154	109
Exhibition Hall B	184×132×35	24,288	1,180	2,420	2,184	1,260	155	109
Prefunction	–	18,862	–	1,880	–	–	12	12



## Meeting Rooms Level

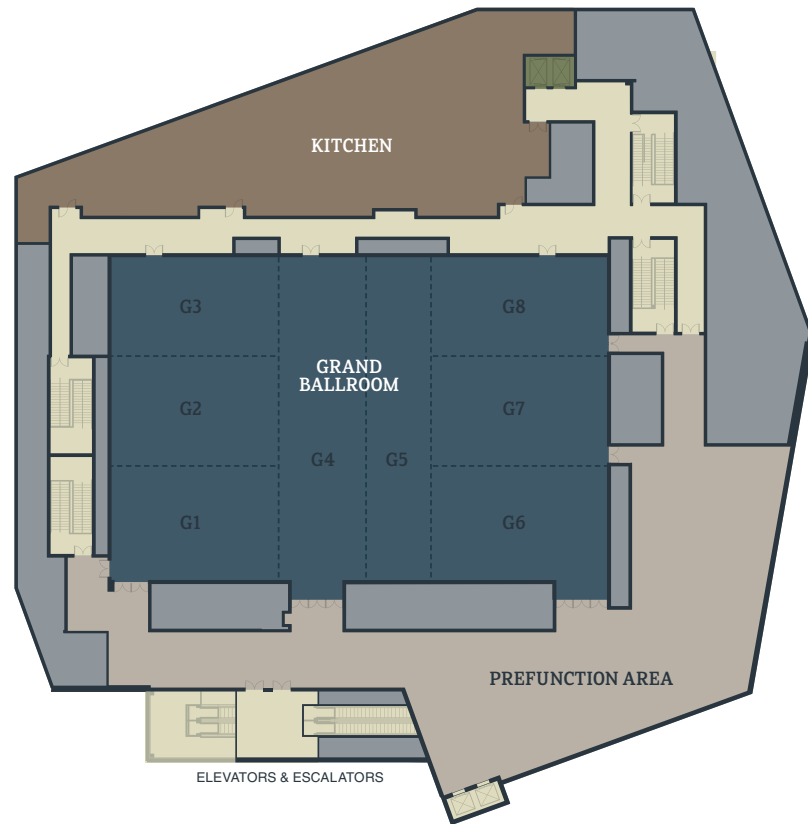
- nearly 20,000 total square feet
- 12-foot-high ceilings
- 20 meeting rooms
- an 8,000-square-foot junior ballroom
- a luxurious board room

ROOM	SIZE		CAPACITY			
	L x W x H	SQ. FT.	BANQUET 72" ROUNDS	RECEPTION	THEATER	CLASSROOM
<b>MEETING ROOMS</b>						
Meeting Room 1	34x27x12	918	50	90	98	56
Meeting Room 2	34x27x12	918	50	90	98	60
Meeting Room 3	32x29x12	928	50	90	105	55
Meeting Room 4	27x27x12	729	40	75	88	47
Meeting Room 5	33x26x12	858	50	85	97	52
Meeting Room 6	33x29x12	957	50	95	105	55
Meeting Room 7	34x29x12	986	50	95	119	66
Meeting Room 8	32x28x12	896	50	90	105	62
Meeting Room 9	32x28x12	896	50	90	105	62
Meeting Room 11	35x25x12	875	50	85	91	54
Meeting Room 12	35x22x12	770	50	75	87	51
<b>BOARD ROOM</b>	31x28x12	868	-	-	-	-
<b>JUNIOR BALLROOM</b>						
Junior Ballroom A & B	120x57x12	6,840	470	680	702	396
Junior Ballroom C & D	62x57x12	3,534	230	350	376	186
Junior Ballroom A, B & C	57x57x12	3,249	200	325	338	162
Junior Ballroom B, C & D	92x57x12	5,244	370	525	588	318
Junior Ballroom A	87x57x12	4,959	350	500	520	270
Junior Ballroom B	57x33x12	1,881	140	180	200	102
Junior Ballroom C	57x30x12	1,710	90	170	156	90
Junior Ballroom D	57x30x12	1,710	90	170	156	90
Junior Ballroom A1	57x27x12	1,539	80	150	156	81
Junior Ballroom A2	28x33x12	924	50	90	123	64
Junior Ballroom A2	28x33x12	924	50	90	123	64
Junior Ballroom B1	28x30x12	840	50	85	96	48
Junior Ballroom B2	28x30x12	840	60	85	96	48
Junior Ballroom C1	28x30x12	840	60	85	96	48
Junior Ballroom C2	28x30x12	840	60	85	96	48
Junior Ballroom D1	28x27x12	756	50	75	84	45
Junior Ballroom D2	28x27x12	756	50	75	84	45
Prefunction	-	10,976	-	1,100	-	-
Covered Terrace	-	5,383	120	540	-	-
Lower Cafe Terrace	-	18,862	446	1,900	-	-

# Irving Convention Center at Las Colinas

## Ballroom Level

- just under 20,000 square feet ■
- 24-foot-high ceilings ■
- divisible in up to 6 sections ■
- 1,260 banquet guests ■
- 2,000 reception guests ■



ROOM	SIZE		CAPACITY					
	L × W × H	SQ. FT.	BANQUET 72" ROUNDS	RECEPTION	THEATER	CLASSROOM 18" TABLES	8' × 10' BOOTHES	10' × 10' BOOTHES
Grand Ballroom	112×172×24	19,264	1,260	2,000	1,936	1,070	108	86
Grand Ballroom G1-G5	112×113×24	12,762	800	1,265	1,440	831	–	–
Grand Ballroom G4-G8	112×117×24	17,094	810	1,310	1,550	840	–	–
Grand Ballroom G1-G4	112×86×24	9,957	620	965	1,040	570	–	–
Grand Ballroom G5-G8	112×86×24	9,429	620	965	1,040	570	–	–
Grand Ballroom G1-G3	112×55×24	6,111	380	615	702	378	–	–
Grand Ballroom G4*	112×31×24	3,846	–	–	–	–	–	–
Grand Ballroom G5*	–	2,805	–	–	–	–	–	–
Grand Ballroom G6-G8	112×58×24	6,624	400	650	728	372	–	–
Grand Ballroom G1	55×37×24	2,005	130	200	192	105	–	–
Grand Ballroom G2	55×38×24	2,093	130	210	192	126	–	–
Grand Ballroom G3	55×37×24	2,013	120	200	192	126	–	–
Grand Ballroom G1-G2	75×55×24	4,098	250	410	391	261	–	–
Grand Ballroom G2-G3	75×55×24	4,106	250	410	391	267	–	–
Grand Ballroom G6	58×37×24	2,250	130	215	216	123	–	–
Grand Ballroom G7	58×38×24	2,228	130	220	252	132	–	–
Grand Ballroom G8	58×37×24	2,146	130	215	228	129	–	–
Grand Ballroom G6-G7	75×58×24	4,478	280	435	487	282	–	–
Grand Ballroom G7-G8	75×58×24	4,374	280	435	492	282	–	–
Grand Ballroom Prefunction	–	10,526	300	1,180	–	–	25	20

\*May be used for hospitality or back-of-house service only.



View toward the plaza from the street

Phase Two of the convention center development is the Las Colinas Entertainment Center – a shining new star in the world of live music, culture and cuisine. This multi-level complex will be the first of its kind, offering a dazzling array of opportunities for music, dining and entertainment.

All day, every day, the center will deliver a genuine feast for the senses, surrounding visitors with stellar musical acts, amazing cuisine, dazzling technology and Texas heritage. Fresh experiences abound, from an Irish grill and upscale South American steakhouse to an ultra-hip dance club.

Visitors will find:

- Upscale shops, nightclubs and restaurants serving food and drink from many cultures
- Pedestrian-friendly street and outdoor gathering places with water features, flowers and colorful decor
- Expansive patio spaces for dining, special events, concerts, festivals and non-stop entertainment activity

The center's bold concept, envisioned by the creators of some of the most successful entertainment venues in the United States, will provide an unprecedented new level of live music and entertainment options for visitors, conventioners and local residents.



### Fact Sheet

- State-of-the-art, five-level entertainment complex
- Multi-faceted mix of live music venues, restaurants, retail stores and colorful outdoor features
- Total of 1.1 million square feet of space, including:
  - 9 live music stages featuring multiple musical styles nightly
  - 14 full-service entertainment restaurants and clubs
  - Approximately 12,500 square feet of retail shops and one-of-a-kind artisan market