

# Quick Reference Guide

Rocky Mountain Park Inn  
Estes Park, Colorado



## ROCKY MOUNTAIN PARK INN ♦ QUICK REFERENCE GUIDE



**ROCKY MOUNTAIN PARK INN**, is your comfortable lodging portal to the beauty and magic of Estes Park, Colorado and nearby Rocky Mountain National Park. From convention and business bravado to basic good service, food and accommodations, Rocky Mountain Park Inn prides itself on delivering comfortable and relaxing stays for business, family and leisure travelers. Offering 150 rooms, lodging choices include one- and two-bed guest rooms and 5 parlor suites, all with in-room high-speed wireless connections, free local calls and other amenities. The hotel adjoins the *Estes Park Conference Center* and hosts a variety of meetings, events and conferences year round. Mountain scenery and this high-tech conference space create a productive conference location attractive to both planners and attendees. Your business gatherings are orchestrated by professional sales managers tending to every space, food and beverage (F&B) and audio visual (A/V) detail. All hotel guests enjoy an indoor heated swimming pool and whirlpool, fitness center and pool-side game area. Enjoy delicious food and spirits at **LongZ**, the aptly named on-site restaurant and lounge or—for those who prefer—call down for room service. Parking for cars, buses and large vehicles is abundant and easy to navigate. And, the hotel caters to animal lovers with a variety of pet-friendly services and facilities.

### TRANSPORTATION

Estes Park is easily accessible from anywhere along the I-25 corridor in northern Colorado, via US 34 or US 36. From the west, visitors can enter through *Rocky Mountain National Park* on US 34, which connects to I-70 via US 40. Denver International Airport, the closest major airport to Estes Park, just 70 scenic miles southeast, offers flights to hundreds of locations worldwide. Rental cars, taxis and shuttle services are available at the airport. On-site self-parking is available at the hotel.

### DESTINATIONS

#### ESTES PARK AREA HISTORY

You are not the first to experience the glory of this beautiful destination. Native inhabitants, including Arapaho and Ute, considered the area of north-central Colorado sacred. Anthropologists and historians consider Old Man Mountain (on the western end of current-day Estes Park) an ancient native Vision Quest site; and many artifacts exist to bolster this claim. However, by the time homesteading began, the native tribes had left the area and were no longer occupying the land.

In 1860 Joel Estes homesteaded the high mountain valley in the northern front range of the Colorado Rockies. In 1864 the editor of the *Rocky Mountain News*, William Byers, unsuccessfully attempted to climb Longs Peak. He lodged with the Estes family during this excursion. He became so enamored of the area that he published a story about it in the *News*—referring to the area as “Estes Park” for the first time, in honor of his hosts.

Byers, along with his famed companion John Wesley Powell, finally conquered Longs Peak in 1868. He again wrote about his adventure in the *News*—initiating an onslaught of interest in the area from hunters and naturalists. In just a few short years, the new owner of the Estes homestead, Griffith Evans, found himself operating a lucrative Colorado B&B. In fact, this enterprise was so successful that by 1871 Evans had expanded, building cabins and a large dude ranch to accommodate visitors. Estes Park was officially platted at the confluence of Fall River and The Big Thompson River in 1905. By 1909 F. O. Stanley, inventor of the Stanley Steamer, opened his namesake hotel on land he acquired from an Irish nobleman, the Earl of Dunraven (a grand chapter in

Estes history in and of itself!). The hotel booked solid the entire first summer—partly because Stanley Steamer Mountain Wagons were used to transport guests to Estes from the nearby train stop, Lyons, Colorado. On July 26, 1915 Woodrow Wilson signed the bill establishing *Rocky Mountain National Park*, thus securing Estes Park as the eastern gateway to this amazing American wilderness area.

TODAY’S ESTES PARK is a treasured spot, loved by locals and visitors alike. They appreciate its village-like quaintness and its incredible beauty. Just 90 minutes drive northwest of Denver, Estes Park is close to Denver’s many cultural, historic and scientific attractions as well. And the diverse offerings of the immediate area provide a variety of unique excursions and fun activities.

#### Area Attractions:

- **ROCKY MOUNTAIN NATIONAL PARK (RMNP)**



This 1,821,495-acre park straddles the Continental Divide for over 40 miles and delights guests with more than 350 miles of trails for hiking, biking, horseback riding and cycling. Park scenery showcases over 78 peaks that are 12,000 feet or higher—the loftiest being *Longs Peak* at 14,259 ft., which dominates the skyline and is visible for miles. During the summer, *Trail Ridge Road*—the country’s highest continuous paved road—weaves its way across the Continental Divide for 50 miles, through pristine tundra landscapes to the Park’s western-slope gateway, Grand Lake, Colorado. It has been said that *Rocky Mountain National Park* contains more beauty per square mile than any other place in the country—and it’s easy to see why. The Park’s natural inhabitants include elk, deer, moose, bears, bighorn sheep, mountain lions, marmots and a wide variety of birds including bald eagles, golden eagles, hawks and peregrine falcons.



## ROCKY MOUNTAIN PARK INN ♦ DESTINATIONS

### **Seven Day Entrance Fee:**

For Passenger Cars/\$20  
For Pedestrians, bicycles, motorcycles & mopeds/\$10 per person, not to exceed \$20 per vehicle

**Commercial Tour Fee:** The fee is based on passenger capacity. This means the total seating capacity, not the actual number of people: 1-6 people/\$25; 7-15 people/\$75; 16-25 people/\$100; 26 or more people/\$200

**Annual Park Pass:** \$40—allows unlimited entry to RMNP for a full 12 months from date of purchase.  
[www.nps.gov/romo](http://www.nps.gov/romo)  
970-586-1206

### • **ESTES PARK MUSEUM**

The museum's permanent exhibits celebrate those who have resided in the area—from Native Americans to early explorers, mountaineers, pioneers, lodge owners, and women homesteaders. View a 1909 Stanley Steamer Mountain Wagon, a furnished historic cabin and general store recreation, a beaver felt hat and a vintage National Park Service uniform. Kids learn via hands-on exhibits.  
*Free admission. Located at U.S. Highway 36 and Fourth Street. Hours vary by day and season. Call in advance to confirm.*  
[www.estesnet.com/museum](http://www.estesnet.com/museum)  
970-586-6256

### • **MACGREGOR RANCH**

City slickers and buckaroos alike enjoy this last remaining working cattle ranch in Estes Park. MacGregor Ranch provides a unique, living history example of the “early days” in Estes Park. Now a museum, the main ranch—with its 42 buildings (28 of which are listed on the National Register of Historic Places) is a guaranteed window into the past, a step back in time complete with ranch hands, cattle, horses, barns and corrals. Stroll the grounds—smell the mythical cowboy coffee as you saunter through the mountain air.  
*Admission fee & seasonal hours. At MacGregor & Devil's Gulch Road.*  
[www.macgregorranch.org](http://www.macgregorranch.org)  
970-586-3749

### • **ESTES PARK AERIAL TRAM**

Gondolas carry passengers to the top of Prospect Mountain (8,900 feet elevation) where they marvel at spectacular panoramic views of Longs Peak, the Continental Divide, and Estes Park Village. This is one of the few local tourist spots where visitors are actually encouraged to feed the chipmunks, so come prepared!

*Fee charged; open mid-May to mid-September; 420 E. Riverside Drive*  
[www.estestram.com](http://www.estestram.com)  
970-586-3675

### • **THE HISTORIC PARK THEATRE**

During the summer, nostalgia buffs enjoy first-run films at Estes Park's family-owned and operated historic downtown movie house. Built in 1913, The *Historic Park Theatre* is the oldest theatre west of the Mississippi River (built for motion pictures) that is still operating as a movie house. Live stage productions are also performed for summer audiences. Groups welcome.  
[www.historicparktheatre.com](http://www.historicparktheatre.com)  
970-586-8904 - Show times

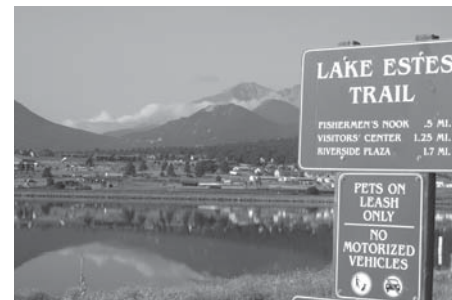
### *Area Recreation / Activities:*

### • **ESTES PARK GOLF COURSE**



Estes Park Golf Course is widely recognized as one of the most beautiful in the United States. The *18-hole Course* is tucked away in a natural, verdant valley surrounded by spectacular mountain peaks, trees & vistas. Open mid-April through October, golfers often share the greens with herds of deer, elk and other “local critters.” The *Executive 9-hole Course* (open all year!) proceeds along the picturesque Big Thompson River—so bring your camera as well as your clubs.  
*Reservations suggested.*  
[www.golfestes.com](http://www.golfestes.com)  
866-586-8146 (toll free)  
970-586-8146

### • **LAKE ESTES RIVER WALK**



The town's Lake Estes (across the street from the hotel) is ringed by a wide, paved path that meanders through a bird sanctuary, along a golf course (watch for elk; they love the grass) and near the Big Thompson River. Experience the joy of taking lakeside picnics, bike rides or walks in the rare, high-mountain air.  
[www.estesvalleyrecreation.com](http://www.estesvalleyrecreation.com)  
970-586-8191

### • **BOATING**



For a leisurely tour of Lake Estes, rent a foot-powered paddle boat at the summer marina. Or plan a floating picnic on a pontoon boat, also available at the marina. Sail boards are fun and colorful on the water—but you'll have to bring wet suits to protect against the year-round cool water temperature. Water skiers “rule” on Tuesday, Wednesday and Thursday evenings after 5PM (May-September).  
[www.estesvalleyrecreation.com/marina/marina-info](http://www.estesvalleyrecreation.com/marina/marina-info)  
970-586-2011

## ROCKY MOUNTAIN PARK INN ♦ QUICK REFERENCE GUIDE

### • BICYCLING / HIKING



The trail around Lake Estes is accessible for all ages, all year round. It is paved, level and easy to navigate on foot, by wheelchair or on a bicycle. Many types of bicycles are available for rent during the summer months, including tandems, 4-wheelers and mountain bikes.

Downhill bicycle and cross-country tours in *Rocky Mountain National Park* are also available through several local outfitters.

[www.coloradobicycling.com](http://www.coloradobicycling.com)  
970-586-4241

### • MINIATURE GOLF

Yes, miniature golf is big in Estes Park and provides hilarious recreation for families and “kids of all ages.” There are several local courses to choose from. Get out and play—test your timing, dexterity and funny bone.

*Tiny Town Miniature Golf*  
970-586-6333

*Cascade Creek Mini-Golf*  
970-586-6495

*Fun City Slides/Fast Tracks/Miniature Golf*  
970-586-2070

### Day Trips:

*Estes Park is the hub for scenic drives to interesting places.*

### • TRAIL RIDGE ROAD

The highest continuous paved road in the U.S. travels through the heart of *Rocky Mountain National Park* from Estes Park to Grand Lake. It is open from Memorial Day until heavy snowfalls make the route impractical to keep clear, usually sometime from late-September to Thanksgiving. The route climbs from approximately 7,800 feet at Park Headquarters to more than 12,000 feet at the summit, with 11 paved miles above tree line. No other arctic-like world exists that is as accessible as Trail Ridge Road. View the alpine tundra (which makes up a full third of the park)—a fragile environment

of aged but dwarfed plants and animals that have adapted to the high elevation. Plan at least 4-6 hrs. for this trip.

*See Pg. 2 for RMNP Entrance Fee schedule*

### • OLD FALL RIVER - TRAIL RIDGE ROAD LOOP

For a half-day treat, take U.S. 34 west through the National Park's entrance to Fall River Road, built in 1920. When you reach Endovalley, the road becomes gravel, one-way and uphill for nearly 10 miles. Waterfalls, glacier deposits, icy pools and breathtaking views are all part of this trip. Because of the steep grades and switchbacks, it is not open to trailers or mobile homes. At the Alpine Visitors Center, turn left. Along the route, you will pass Trail Ridge Road's high point. From Deer Ridge Junction, continue to Estes Park on scenic U.S. Hwy. 34 or U.S. Hwy. 36.

*See Pg. 2 for RMNP Entrance Fee schedule*

### • ST. VRAIN HALF-DAY CIRCLE TRIP

This *Peak-to-Peak Scenic Byway* trip starts in Estes Park on Colo. Hwy. 7, and travels south; you climb over 1,500 feet through densely forested areas, viewing snow capped mountains (including *Longs Peak* and *Twin Sisters*) that parallel the road. Follow Hwy. 7 south to Allenspark and on through impressive boulder-lined canyons to Lyons. Then take U.S. Hwy. 36 from Lyons back to Estes Park. This 57-mile trip takes about three hours with stops.

*See Pg. 2 for RMNP Entrance Fee schedule*

### • BIG THOMPSON-GLEN HAVEN HALF-DAY LOOP

Travel the Big Thompson Canyon east as it follows its river namesake on U.S. Hwy. 34 from Estes Park. About 16 miles from Estes, you'll enter “The Narrows,” a spectacular winding gorge carved by the river's long erosion of rock formations. Watch for bighorn sheep here. At The Dam Store, return west along the same route to Drake before turning right on Devil's Gulch Road to Glen Haven. South of Glen Haven at the top of the switchbacks, you'll encounter a locally favored and spectacular view of the Estes valley.

*See Pg. 2 for RMNP Entrance Fee schedule*

### CLIMATE

Month	Highs		Lows	
January	38°F	3°C	16°F	-8°C
February	41°F	5°C	17°F	-8°C
March	45°F	7°C	21°F	-6°C
April	54°F	12°C	27°F	-2°C
May	62°F	16°C	35°F	1°C
June	73°F	22°C	41°F	5°C
July	78°F	25°C	46°F	7°C
August	77°F	25°C	45°F	7°C
September	70°F	21°C	38°F	3°C
October	60°F	15°C	30°F	-1°C
November	46°F	7°C	23°F	-5°C
December	40°F	4°C	18°F	-7°C

### GUEST ROOMS AND SUITES

“Green” Hotels Association® 



### ROCKY MOUNTAIN PARK INN,

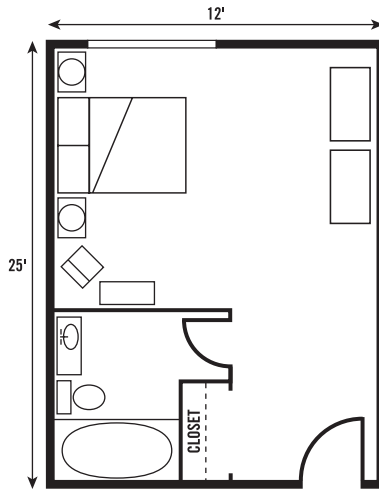
offers 150 tastefully appointed guest rooms including five two-room Parlor suites—with balcony and pool-side rooms available. Our *Honeymoon Suite* has an outfacing window and a large balcony with a swing chair and overlooks the pool. The Hotel, completely refurbished in 2010, is centrally located and connected to the *Estes Park Conference Center*. The Hotel/Center are within walking distance of downtown Estes Park, Lake Estes Riverwalk and just four miles from *Rocky Mountain National Park*. Children 18 years and younger stay free in the same room with their parents.

Available upon request and subject to availability we are happy to provide:

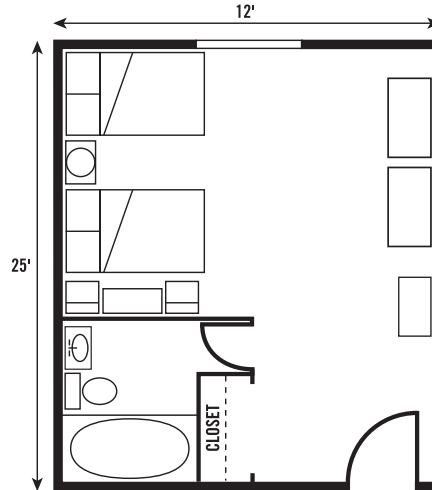
- ADA accommodations
- 100% Smoke-free
- Connecting rooms

## ROCKY MOUNTAIN PARK INN ♦ GUEST ROOMS & AMENITIES

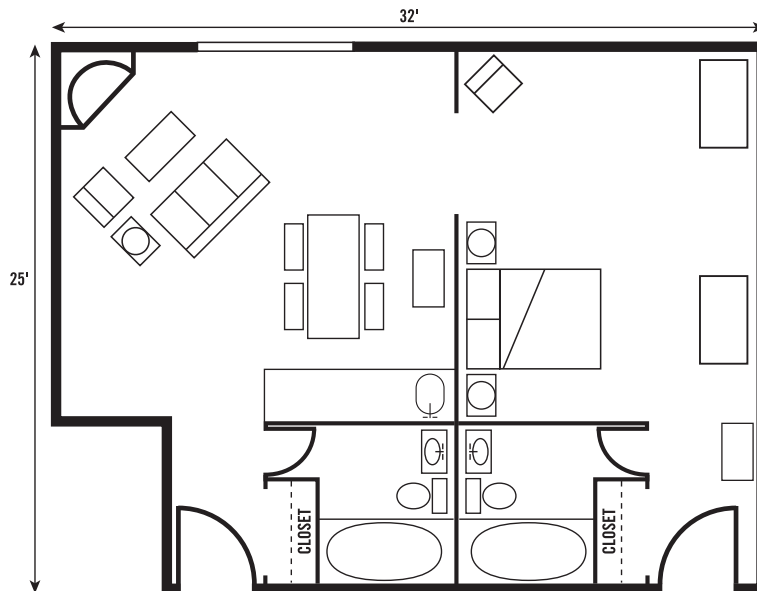
**SINGLE ROOM**  
King Bed, Full Bath



**DOUBLE ROOM**  
Two Double Beds, Full Bath



**TWO-ROOM PARLOR SUITE**  
One King Bed, One Queen-size Sofa Bed, Two Full Baths, Kitchenette



### IN-ROOM AMENITIES

- Wi-Fi Internet access
- Remote control 32" flat screen tv
- In-room movie, premium cable channels and HBO
- Free local calls/voice-mail
- A/C w/individual climate controls
- Coffee maker/free tea & coffee
- Large work desk with lamp
- AM/FM clock radio/alarm
- Hair dryer
- Iron/ironing board
- Interior corridors
- Electronic locks with 24-hour key access

### GUEST ROOMS: SINGLE AND DOUBLE

Comfortable carpeted accommodations for two, with a king bed or two double beds, and private bathroom with shower. Enjoy extra space and beautiful mountain views. There is a well-lit work area with free wireless high-speed Internet access. ADA accessible rooms available.

### PARLOR SUITES

Our two-room parlor suites have an expansive living room with an electric fireplace, 2 TVs (in BR and LR), and offer a king-size bed, a queen-size sofa bed and 2 full baths plus a 4-person conference/dining table and a large work desk with Internet access. There is also a kitchenette with microwave, small refrigerator, and sink.

### GUEST SERVICES AND FACILITIES

- 100% Smoke-free/ADA rooms
- Elevator service
- Rollaway bed/crib
- Room service
- Wake-up service
- Large indoor heated pool/whirlpool
- Fitness center

## ROCKY MOUNTAIN PARK INN ♦ QUICK REFERENCE GUIDE

- Laundry service & dry cleaning  
*Mon–Fri, 9am–5pm. Same day service available with request at the Front Desk.*
- Self-laundry facilities  
*Located in Room 302; 7am–11pm daily*
- Safe deposit boxes at Front Desk
- Ice & soda/water vending machines
- Pets welcome
- Complimentary parking; easily accommodates RVs, school and tour buses
- Business Services—at the Front Desk
- Free *USA Today*, Monday–Friday
- Forget something? We offer emergency amenities at no charge to our guests.

### VIP GIFTS

Special arrangements can be made for clients to purchase welcome amenities and gifts for their VIP guests, including:

- Chocolate-dipped strawberries
- Chilled wine and/or champagne (must be 21)
- Milk and cookies
- Cold beer served with tortilla chips and salsa (must be 21)
- Fruit basket
- Bouquet of flowers
- Other special requests

### SHOPPING

Estes Park has long been known for its cute shops, friendly merchants, candy and ice cream purveyors and art galleries featuring Native arts. **Trendz**, an affiliated downtown retailer, adds pizzazz to the mix offering unique and distinctive gifts, jewelry and home furnishings. Trendz is happy to provide free gift wrapping and will ship packages for you if you like.

### DINING

#### LONGZ – A MOUNTAIN GRILL

This versatile on-site restaurant is actually 3 venues in one. Open daily for breakfast, lunch and dinner serving Rocky Mountain regional cuisine, salads, soups, coffees



and desserts. Enjoy family dining with breakfast and dinner buffets and a kids' menu. **LongZ – A Mountain Grill** features an intimate environment and upscale dining after 5pm nightly and delights with its distinctive wine list, attentive service and decadent desserts. Specialties feature sustainable, locally-caught Ruby-Red Trout and Elk Loin Medallions. And there's the **LongZ Lounge** with an extensive martini menu, premium well drinks and local brews, plus appetizer specials. It is a fun place for relaxing and visiting or hosting a happy-hour gathering!

#### Hours of Operation

Grill*	
Breakfast	7am–11am
Lunch	11am–1:30pm
Dinner	5pm–9pm
Room Service	7am–9pm

Lounge*	
Monday–Friday	2pm–close
Saturday–Sunday	12pm–close

*\*Open daily; hours vary by season*

### RECREATIONAL OFFERINGS

#### On-Site

- Heated indoor pool and patio  
*(The pool is 25' x 50', 3-9 ft. deep, 86°)*
- Fitness center
- Whirlpool
- Foosball table and video games located in pool area



*For registered guests; open 7am to 11pm*

#### Off-Site

- Golf
- Lake Estes Riverwalk
- Fly fishing
- Rock climbing
- Bird/wildlife watching
- Nature walks/hiking/boating
- Shopping
- Spa services and grooming
- Four-wheel drive/Jeep tours
- Miniature golf

- Horseback riding
- Mountain biking
- Whitewater rafting
- Cross country skiing
- Snowshoeing

#### Rocky Mountain National Park

Rangers and naturalists conduct numerous popular summer programs for children and families: unique campfire talks; ranger-led daytime and full moon hikes; programs and videos at the *Beaver Meadows Visitor Center*; ranger talks at the *Fall River Visitor Center*; the *Junior Ranger* program and varied naturalist talks.

In the wintertime there is an evening program at headquarters every Saturday and guided snowshoe treks in the Park at varying scheduled times.

[www.nps.gov/romo/forkids/index.htm](http://www.nps.gov/romo/forkids/index.htm)  
—for current seasonal programs/times.

Visitor information: 970-586-1206

[www.nps.gov/romo](http://www.nps.gov/romo)

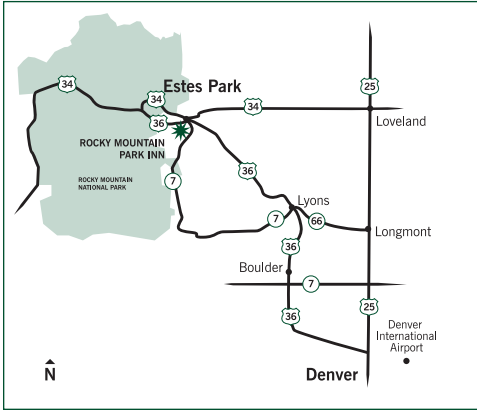
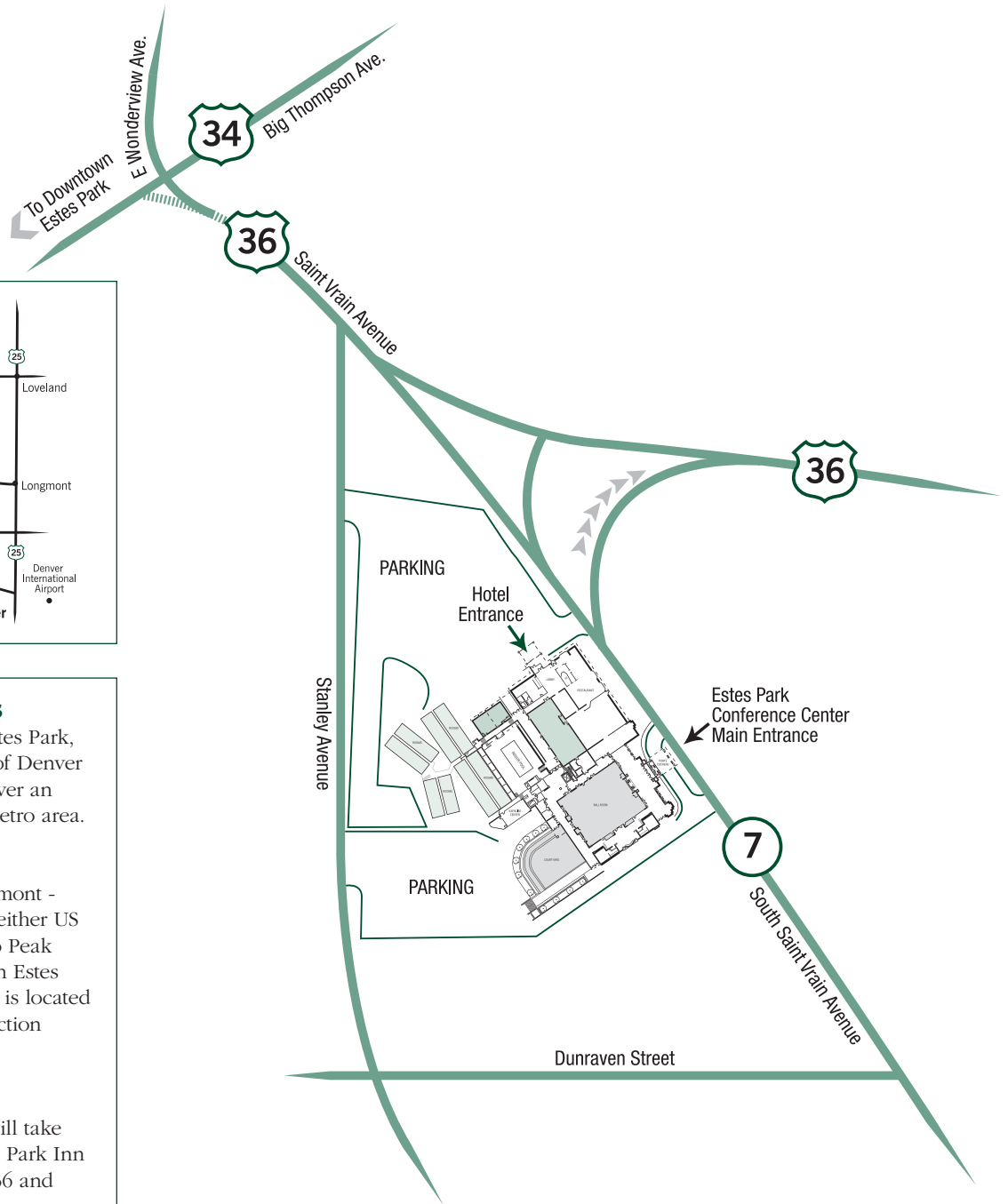
### CONFERENCE AND BANQUET FACILITIES

The Estes Park Conference Center, adjoining Rocky Mountain Park Inn, boasts 20,000 square feet of meeting, ballroom and banquet space—with 12 versatile meeting rooms and an inviting outdoor area for banquets, theme parties, or special events. The 8,000 square-foot **Grand Ballroom** is divisible into six sections, accommodating up to 1,000 guests. The 3,600 square-foot **Junior Ballroom** easily facilitates everything from general sessions to product displays. Plan seminars or breakouts in the **Trail Ridge**, **Lake Estes**, or **Columbine** rooms. Stage smaller, intimate sessions in our **Big Horn** or **Blue Spruce** meeting rooms. Each spacious room features top technology and near-perfect acoustics that keep everyone focused and productive. These varied function spaces combined offer a spectacular venue for casual receptions and informal gatherings, while also providing the perfect ambience for more formal, social gatherings and/or business presentations.

*To arrange a site visit, please call Sales at 970-586-2333, ext. 300 or email [kyengo\\_rmpi@msn.com](mailto:kyengo_rmpi@msn.com).*



## ROCKY MOUNTAIN PARK INN ♦ DRIVING DIRECTIONS



### DRIVING DIRECTIONS

Rocky Mountain Park Inn in Estes Park, Colorado is only 70 miles NW of Denver International Airport and just over an hour's drive from the Denver-Metro area.

#### *From Denver:*

Take I-25 to Colorado 66 (Longmont - Lyons) exit. From Lyons, travel either US Hwy. 36 or CO Hwy. 7 (Peak to Peak Highway) to Estes Park. Once in Estes Park, Rocky Mountain Park Inn is located on the SW corner at the intersection of US Hwy. 36 and CO Hwy. 7.

#### *From Boulder:*

A beautiful drive on Hwy. 36 will take you directly to Rocky Mountain Park Inn at the intersection of US Hwy. 36 and CO Hwy. 7.



## ROCKY MOUNTAIN PARK INN ♦ QUICK REFERENCE GUIDE

### CATERING AND CONFERENCE SERVICES

Rocky Mountain Park Inn offers a unique blend of Rocky Mountain regional cuisine in addition to traditional fare. Our on-site Executive Chef and Food & Beverage staff masterfully prepare an endless array of menu options, ranging from cost-effective to lavish, including buffet menus, served luncheons and dinners, and unique food-station menus. Our Chef and professional Catering Department will showcase their talent delivering your desired menu selections or creating a unique menu around your event theme.

#### Technical Assistance

Special arrangements can be made to fulfill any request. The hotel's standard inventory includes overhead/slide projectors, data projectors, LCD color display panels, microphones, video recorders, players, TV, screens, flip charts, easels and marker boards. The Hotel/Center provide on-site technicians to deliver a flawless performance.

*Telecommunications* and electrical hookups are designed to meet industry standards. The Engineering department is available during regular business hours for general assistance with lighting, room temperature control and minor repairs.

#### Receiving

The hotel offers full-service shipping and receiving functions, located at the Front Desk. Items are stored in a separate, secured storage area. Limited space is available for the storage of large items. *Please coordinate shipping to the date of your arrival. For events, tradeshow, seminars, and meetings: all packages should be sent to the attention of your group's name, with arrival date and banquet coordinator listed.*

### BUSINESS SERVICES

- Internet access
- Complimentary computer in the lobby for guests to access the Internet
- Faxing and copying at the Front Desk

### MUSIC AND ENTERTAINMENT

Our experienced banquet coordinator can arrange music and entertainment to complement any part of your function or event. We are happy to consult with you regarding customized themes, staging and/or tradeshow set ups.

### TOUR/MOTORCOACH SERVICE

Portage is available on a request basis, plus there is ample FREE parking. *Please contact Group Sales for all Group inquiries (lodging and meal stops) and additional information at 970-586-2333, ext. 300.*

### CHILDREN'S AND FAMILY PROGRAMS

The Hotel provides fun-filled activities and the following amenities for children, based on availability:

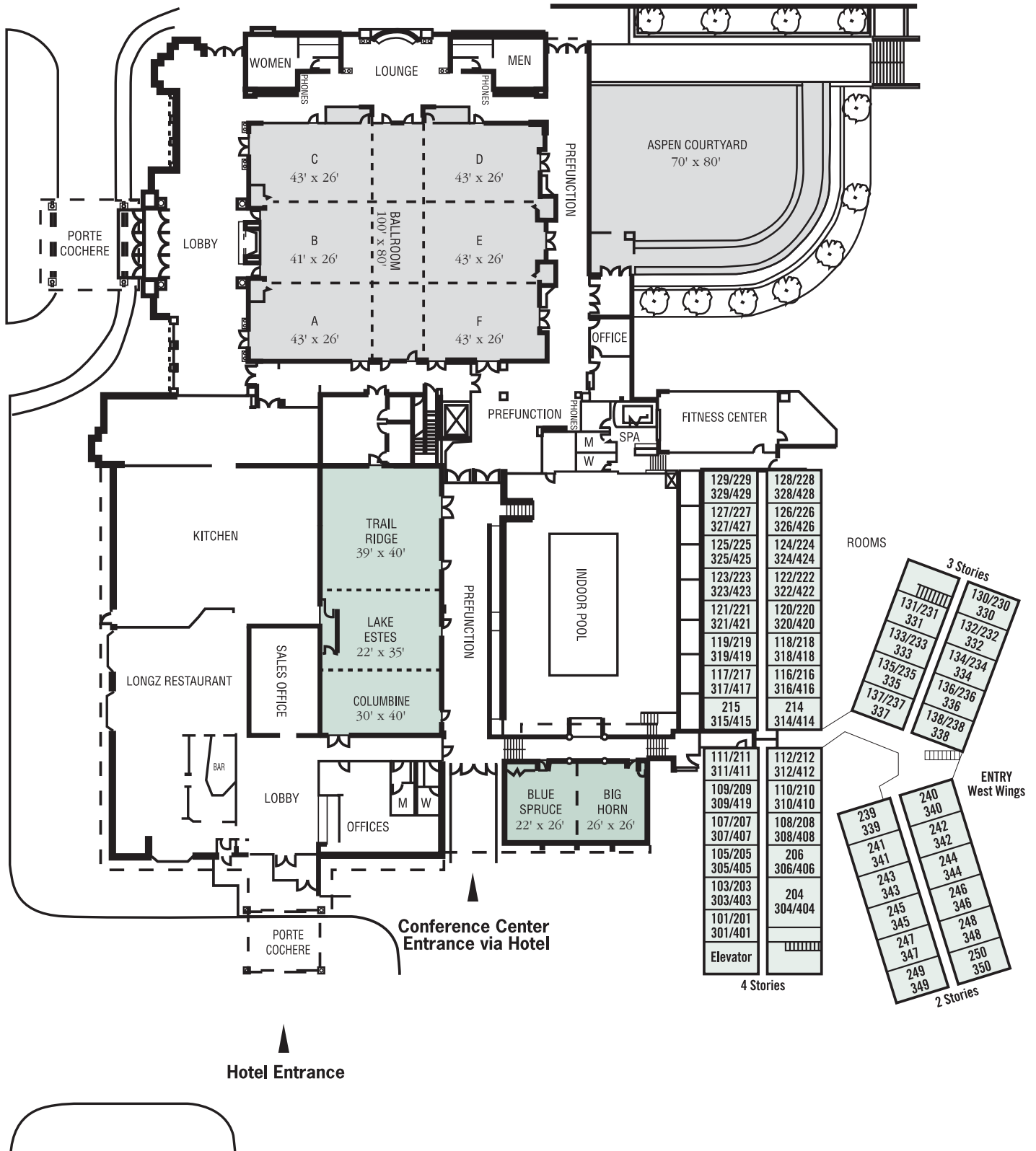
- Cribs
- Children 19 years and younger stay free in the same room as parents.
- High chairs/booster seats

### CONFERENCE CENTER MEETING & BANQUET FACILITIES CAPACITIES

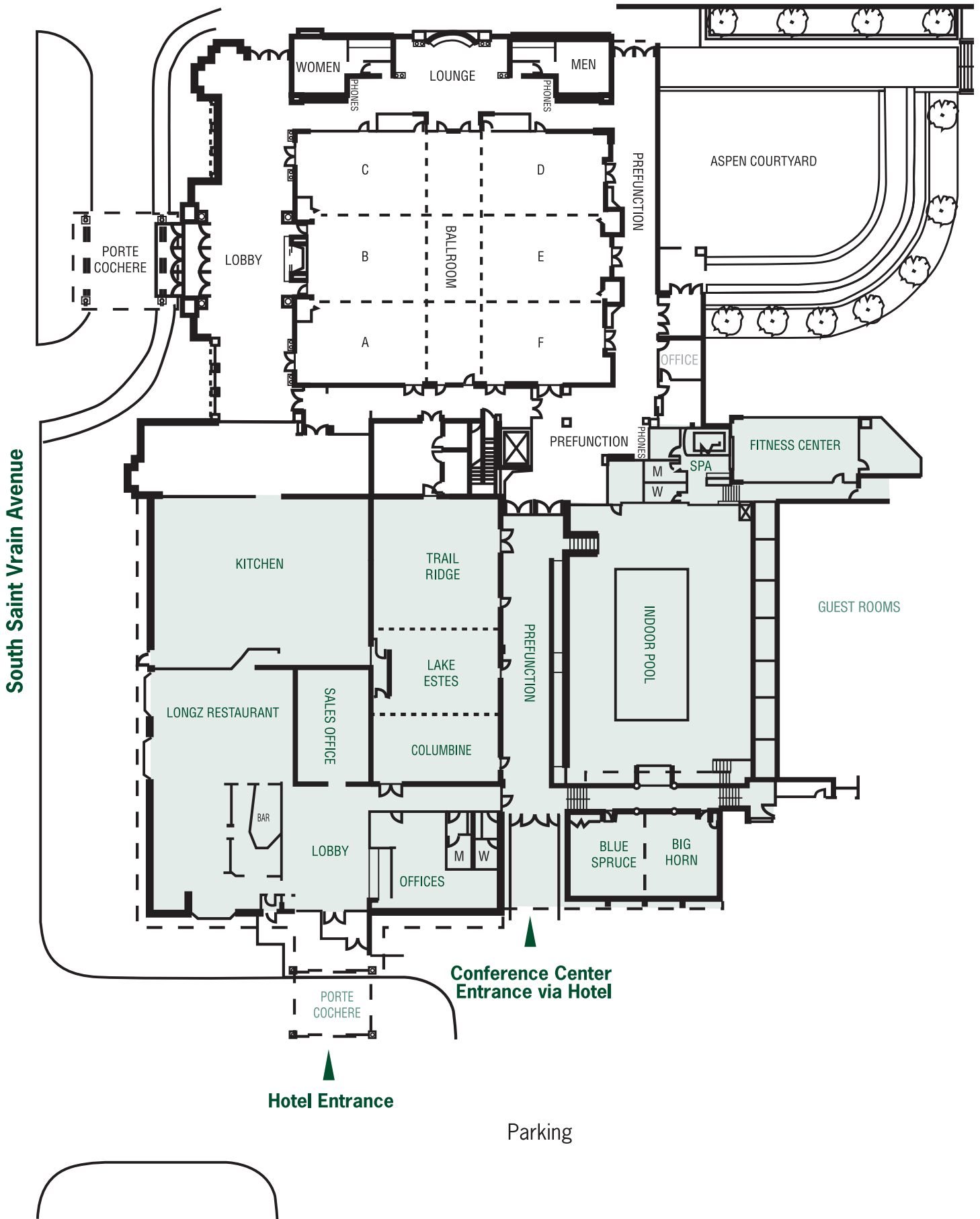
Facility	Theater	Classroom	Banquet	Reception	U-Shape	Conference	Dimensions	Ceiling	Sq. Ft.
<b>Grand Ballroom</b> <i>At 8,000 s.f. it's the largest ballroom in Estes Park!</i>	1,000	650	700	1,000	N/A	N/A	100' x 80'	14'	8,000
<b>Section A</b>	136	90	60	130	30	36	43' x 26'	14'	1,118
<b>Section B</b>	136	90	60	130	30	36	41' x 26'	14'	1,066
<b>Section C</b>	136	90	60	130	30	36	43' x 26'	14'	1,118
<b>Adjustable Corridor</b>							14' x 80'	14'	1,120
<b>Section D</b>	136	90	60	130	30	36	43' x 26'	14'	1,118
<b>Section E</b>	136	90	60	130	30	36	43' x 26'	14'	1,118
<b>Section F</b>	136	90	60	130	30	36	43' x 26'	14'	1,118
<b>Junior Ballroom</b> <i>Intimate function space for any event.</i>	430	250	270	350	N/A	N/A	40' x 90'	9'	3,600
<b>Columbine Room</b> <i>Classic-designed room—spacious and quaint.</i>	145	48	90	150	30	36	30' x 40'	9'	1,200
<b>Lake Estes Room</b> <i>Private meeting room and quiet setting.</i>	80	36	60	90	24	30	22' x 35'	9'	770
<b>Trail Ridge Room</b> <i>Private meeting room and quiet setting.</i>	195	75	120	200	42	45	39' x 40'	9'	1,560
<b>Big Horn Room</b> <i>Natural lighting featuring floor-to-ceiling windows with spectacular mountain views.</i>	60	27	30	65	20	28	26' x 26'	15'	676
<b>Blue Spruce Room</b> <i>Excellent natural lighting; floor-to-ceiling windows.</i>	60	27	30	65	20	28	22' x 26'	15'	572
<b>Aspen Courtyard</b> <i>An outdoor, open air, scenic courtyard.</i>	N/A	N/A	400 (open air)	700	N/A	N/A	70' x 80'	N/A	N/A
<b>RMPI Poolside</b>	N/A	N/A	175	300	N/A	N/A	70' x 80'	N/A	N/A



# ROCKY MOUNTAIN PARK INN ♦ FACILITIES MAP



ROCKY MOUNTAIN PARK INN ♦ CONFERENCE CENTER



# ROCKY MOUNTAIN PARK INN ♦ EVENT NOTES

## EVENT NAME AND DATE

.....  
.....  
.....  
.....  
.....  
.....  
.....  
.....  
.....  
.....

## CATERING DETAILS

.....  
.....  
.....  
.....  
.....  
.....  
.....  
.....  
.....  
.....

## DECORATING / THEME DETAILS

.....  
.....  
.....  
.....  
.....  
.....  
.....  
.....  
.....  
.....

## PLANNED DESTINATIONS

.....  
.....  
.....  
.....  
.....  
.....  
.....  
.....  
.....  
.....

## MUSIC AND ENTERTAINMENT

.....  
.....  
.....  
.....  
.....  
.....  
.....  
.....  
.....  
.....

## IMPORTANT CONTACTS

.....  
.....  
.....  
.....  
.....  
.....  
.....  
.....  
.....  
.....

## NOTES

.....  
.....  
.....  
.....  
.....





RockyMountainParkInn.com  
800.803.7837

**Rocky Mountain Park Inn - Directions:**

From Denver take I-25 to CO Hwy. 66.  
From Lyons, travel either US Hwy. 36 or CO Hwy. 7 to Estes Park.  
Once in Estes Park, Rocky Mountain Park Inn is located on  
the SW corner, at the intersection of US Hwy. 36 and CO Hwy. 7.

**MAILING ADDRESS:**

P. O. Box 1468  
Estes Park, Colorado 80517

**SHIPPING ADDRESS:**

101 South Saint Vrain Avenue  
Estes Park, Colorado 80517

Toll-free Reservations:  
800.803.7837

Telephone: 970.586.2332

Fax: 970.586.2038

Email: kyengo\_rmpi@msn.com

Denver International Airport: 70 miles

certified to ISO 14001



FOREVER  RESORTS

Rocky Mountain Park Inn is independently owned and operated by Rocky Mountain Park Inn, L.L.C. Forever Resorts is an Equal Employment Opportunity Service Provider. Printed on Recycled Paper—70% Pre-consumer Waste, 30% Post-consumer waste, Elemental Chlorine Free. RMP1QRG-6/11-1000-HC-CENTURY