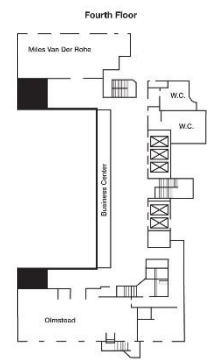
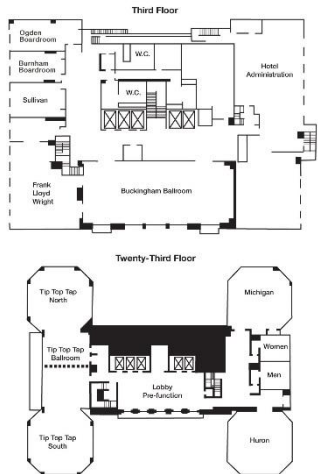


WARWICK

ALLERTON HOTEL, CHICAGO

HISTORIC LUXURY & MODERN STYLE ON MICHIGAN AVENUE



ROOM	SQ FT	CEILING	🍷	☀️	📊	📊	📊
Frank Lloyd Wright	1,054	8'	60	80	60	45	20
Sullivan	486	8'	20	30	20	20	14
Burnham Boardroom	432	8'	-	-	-	-	10
Ogden Boardroom	465	8'	-	-	-	-	10
Mies van der Rohe	700	8'	50	50	50	36	26
Olmstead	805	8'	50	60	70	40	26
Michigan	1,024	8'	60	60	60	48	27
Huron	1,024	23'	80	70	85	56	27
Tip Top Tap Ballroom	3,424	25'	300	250	270	165	-
Tip Top Tap North	1,600	25'	140	90	120	78	27
Tip Top Tap South	1,824	25'	160	110	140	100	27
Buckingham Ballroom	2,210	18'	200	150	210	110	45



- Conveniently situated on iconic Magnificent Mile in the heart of downtown Chicago
- Combines stunning historic architecture from the 1920s Jazz Era with modern services and amenities

- 12,000 square feet of naturally lit meeting space
- Pinnacle twenty-third floor Tip Top Tap Ballroom featuring panoramic views of the Chicago skyline and cathedral ceilings

- Wireless high-speed Internet
- Latest technology and special effects audiovisual equipment available for all meeting rooms
- 443 luxuriously appointed guest rooms, including 84 suites

- Complimentary business center and twenty-fourth floor state-of-the-art fitness center
- Progressive American style cuisine at the stylish M Avenue restaurant and lounge



Warwick Allerton Hotel Chicago | 701 N. Michigan Avenue, Chicago, IL | warwickhotelschi.com | T: 312.440.1500 | F: 312.440.1819

Warwick International Hotels represents a collection of distinct, upscale hotels and resorts known for central locations and quality throughout the world with over 55 hotels worldwide | warwickhotels.com